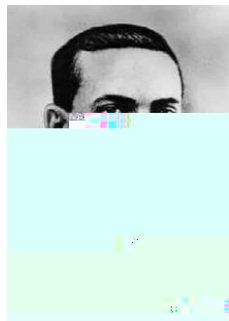


,W DVVHUWV WKDW OHDUQLQJ LV D PRVWO\ VRFLDO SURFHVS\OZKURHE\ SRVVHV PRUHW\OZOWE\DK RUKH OHDUQHU



3V\FKRORJLVW /HY 9\JRWVN\ HVWDEOLVKHG WKLV WKHRU\ WHDFKHUV SHHUV FDUHJLYHUV DQG VRFLHW\ DW ODUJH GHYHORSPHQW /HDUQLQJ\DWDFWLQJ\ZWLQR\RYHW DURXQ DVVHUWHG WKDW OHDUQLQJ ZDV D FXOWXUDO SKHQRPHQR HPEUDFLQJ GLIIHUHQW VW\OHV RI OHDUQLQJ

\$FFRUGLQJ WR DV\O\NLV O SURFHVV RI DFC\SLWR\OHPQRZO VROYLQJ WKUR\JKLQWHUDFWLQRQV ZLWK ZKDW KH WHUPHG ,W LV WKURXJK RXU LQWHUDFWLQRQV ZLWK RWKHUV WKDW HQFRXQWHU ,W LV DQ LQKHUHQW\ESN\QSLDO SWRFHUWVWRQHQ\Q ZKLF\GZ 6RFLDO OHDUQLQJ WKXV SUH\GHV LQGLYLGXW\BOW\GHYH\OGLS\PHQW O

---

## What is the Zone of Proximal Development?

7KH =RQH RI 3UR[LPDO 'HYHORSPHQW RU =3' H[SODLQV WKH DELOLW\ OH\WR H[WHQG EH\RQG WKHLU RZQ LQQDWH DELOLW\ WKURXJK LQW RWKHUV LQ WKHLU HQYLURQPHQW ,W LV WKH GLIIHUHQFH EHWZHHQ ZK DFKLHYH LQGHSHQQHQWO\ DQG ZKDW WKH\ FDQ OHDUQ ZLWK WKH JXLG VXSSRUW RI ZKDW 9\JRWVN\NQRZOHGJHDEOH RWKHUV 2YHU WLPH WKH =3' H[SDQGV DQG JURZV ZLWK WKH LQGLYLGXDO OHDU

ORUH NQRZOHGJHDEOH RWKHUV 3'OHDUQLQJ FHQWUDO WR WKH SURFHVS\ SXW D 0.2 LV VRPHRQH ZLWK KLJKHU OHYHO NQRZOHGJH VNLOO WKDQ WKH OHDUQHU \$V VXFK WKH\ VHUYH DV D VRXUFH RI VRF OHDUQLQJDUH RIWHQ WKRXJKW RI DV ROGHU LQGLYLGXDOV EXW WKH\ SHHUV RU \RXQJHU SHUVRQV SURRZ\OZOWE\DK RUKH OHDUQHU SRVVHV

---

## How Does This Effect Medical Education?

9\JRWVN\ DVVHUWV WKDW OHDUQLQJ LV FXOWXUDOO  
GLIIHUHQW FXOWXUHV\ OH DUOLHQBFGH QWUHQHW\ LV WK  
UHTXLULQJ HGXFDWRUV WR FRQVLGHU LWV HIIHFWV

,PPHUVLRQ LQ D SURIHVVLRQDO VXEFXOWXUH LQIOX  
)URP WKH ODQJXDJH XVHG WR WKH VRFLDO DFFHSWD  
OHDUQHUV\ DELOLW\ WR PDNH PHDQLQJ RI WKHLU H  
DWWHQG WR VRFLDO LQWHUFWLRQV DQG PHVVDJHV WR VKDSH WKH OH

(GXFWRUV LQ WKLV PRGHO VHUYH DV 0.2V DQG SURHJWKH JXH D UHQIRU  
VHHNV WR XQGHUVWDQG WKH WKRXJKWV DQG DFWLRQV\ RDW\HQ.2 DQG  
DQG GHYHORSFHQW RFFXU WKURXJK WKHVH VRFLDO LQWHUFWLRQV L

---

## What Does It Mean for MTeaching?

7KH VRFLRFXOWXUDO P SKDNLJH RI WKH DQGHG JIRU VFDNR QGLQWH DFKQRULP  
EXLOG NQRZOHGJH DQG VNLOO LQ LQFUHPHQWDO VWDJHV )RU H[DPSOH  
OHDUQHUV\ XDFWLFH XSHUYLVLRQ DQG SURYLGH JXLGDQFH IRU VNLOO  
OHDUQHU LV DEOH WR SUDFWLFH WKH VNLOO LQ LWV HQWLUHW\ LQGHS

&RRSHUDWLR\ SSGH D\XQLV DUH DOVR LPSRUWDQW LQ WKLV  
PRGHO WKLV FSSU2V DUH PRUH NQRZOHGJHDEOH RU  
VNLOOHG SHHUV WKDW DUH DOORZHG WR LQWHUFW ZLWK WKH OHDUQ  
ZLWKLQ WKH =3' 7KURXJK WKHVH LQWHUFWLRQV WKH OHDUQHU JURZ  
DQG GHYHORSV ZLWKRXW GLUHFH LQWHUYHQWLRQ IURP WKH WHDFKHU  
&RPSRVLQJ JURXS ZIKWQD POLV\XWH RI KLJ  
SHUIRULQJ VWXGHQWV KHOSV IRVWHU FROODERUDWLYH GHYHORSFHQ

5HFLSURFDO WHDFKLQJ LV DOVR D PHWKRGRORJ\ XQGHU WKLV PRGHO  
VXPPDULJLQJ TXHVWLRQLQJ IFDURLYH QWKH DQV XSHUHQW FWSDEZ DMW  
RWKHU VRFLRFXOWXUDO PHWKRGRORJLHV WKH WHDFKHU\ V LQYROYHP  
LQGHSHQGHQWO\

---

### References

---

&KHUU\ . )HEUXDU\ :KDW LV 6RFLRFXOWXUDO 7KHRU" 9HU\ :HOO 0LO  
[KWWSV\\_ZZZ\\_YHU\Z\\_HLOWRPLRGF\\_W@W\\_ZUKDOV](#)  
0F/HRG 6 JRWVN\ V 6RFLRFXOWXUDO 7KHRU\ RI &RJQLWLYH 'HYHORSFH  
[KWWSV\\_ZZZ\\_VLPSO\SV\FKRORJ\ RUJ\\_Y\JRWVN\ KWPO](#)